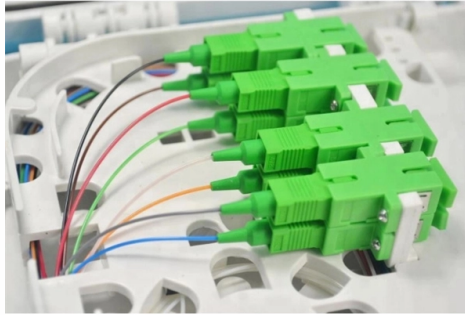


# What is a primary distribution box and what is a secondary distribution box



## Overview

Primary distribution refers to high-voltage systems that transport power over long distances, while secondary distribution involves low-voltage systems delivering power directly to homes and businesses. A feeder usually begins with a feeder breaker at the distribution substation. Many feeders leave substation in a concrete ducts and are routed to a nearby pole. Behind this system, there is a power generating station, that is producing the power and using the transmission lines, that are kept at. The primary distribution system is the backbone of the electrical supply chain, bridging the gap between high-voltage transmission and localized distribution networks. It operates at medium voltage levels, typically ranging between 11 kV and 33 kV, and is responsible for carrying large amounts of. The terms primary, secondary, and tertiary distribution boxes are relative. From the transformer's low-voltage side (0.



## Article Content

Gartner Business Insights, Strategies & Trends For

Gain strategic business insights on cross-functional topics, and learn how to apply them to your function and role to drive stronger performance and innovation.

The Ultimate Guide to Distribution Box Types

Discover the key types of distribution boxes with NUOMAK's comprehensive guide. Learn about Main Distribution Boards (MDB), Consumer Units, Transfer

Primary and secondary power distribution systems

Primary distribution systems Primary distribution systems consist of feeders that deliver power from distribution substations to distribution

WORLD WIDE WEB JOURNAL Home

will open to start the export process. The process may take but once it finishes a file will be downloadable from your browser. You may continue to browse the DL while the export process is in

A Definitive Guide To Distribution Boxes

The distribution box acts as the center of power distribution, distributing electricity to all connected devices. A distribution box, also known as a distribution board, panel board, breaker

The difference between the first,second,and third levels of ...

Generally, first level distribution does not allow direct use of electrical equipment, and second level distribution will be by power equipment because it is three-phase electricity, while third

What are Primary, Secondary, and Tertiary Distribution Boxes?

Generally, primary distribution should not directly supply power to electrical devices. Secondary distribution often supplies three-phase power to equipment such as motors, while tertiary

Three-Tier Power Distribution System in a Newly Constructed

In a newly constructed residential area, a 10kV power line is introduced into the substation. After stepping down the voltage through the transformer's low-voltage side (0.4kV), power distribution is

Understanding Distribution Boxes: Your Guide to Power

What are Distribution Boxes and Their Importance? What are Distribution Boxes and Their Importance? Distribution boxes, or electrical junction

What are the primary and secondary distribution networks?

The primary and secondary distribution networks are vital components of the power delivery system. The primary network transports

Distribution Boxes: Types and Functions

Inside a distribution box are components like circuit breakers, earth leakage units, doorbells, and timers. The building's electrical power enters

Difference between Primary Distribution and Secondary Distribution

What is a Secondary Distribution System? The secondary distribution system is connected to the primary distribution system and is responsible for distributing the electricity to the end users. It

Differences between primary and secondary distribution

Power Distribution Basics This article will clarify certain frequently misunderstood terms among novice engineers: primary and secondary systems,

Primary vs. Secondary Distribution: What Are The Key Differences

Primary distribution refers to high-voltage systems that transport power over long distances, while secondary distribution involves low-voltage systems delivering power directly to

Difference Between Primary and Secondary Distribution System

Among these systems, the primary and secondary distribution networks play crucial roles. Understanding the differences between these two systems is essential for optimizing their

Primary vs. Secondary Distribution: What Are The Key Differences

Understand the critical distinctions between primary (11kV-33kV) and secondary (400V-1kV) distribution systems, including equipment, protection schemes, and application scenarios.

Primary and secondary power distribution systems

Secondary selective service achieves similar results by using switches on secondary voltages rather than primary voltages. With secondary selective service, each

The Primary and Secondary distribution in electrical

Understanding the fundamental distinction between Primary and Secondary distribution in electrical systems is pivotal for designing efficient and

Comprehensive Understanding of Distribution Box

A distribution box helps manage electricity in homes or workplaces. It makes sure power flows safely and efficiently to devices. Let's look at its main jobs. Power distribution and circuit management The

The Meaning and Function of Primary, Secondary, and Tertiary ...

Primary Distribution Box: Serves as the main distribution box for a construction site or project (usually only one). Secondary Distribution Box: Serves each floor or building as needed.

Power Distribution Boxes Explained Simply

Discover the essentials of a Power Distribution Box—how it works, key types, benefits, and tips to ensure safe, efficient electrical power management.

Distribution Box: Types and Functions | Axis-Electricals

A distribution box houses all the contact breakers, earth leakage units, doorbells, and timers. The electrical power supply comes from the network to the building

Important Primary Distribution System Considerations

These feeders include the primary feeder main or main feeder, usually a three-phase, four-wire circuit, and branches or laterals, which can be either

Electric power distribution

A 50 kVA pole-mounted distribution transformer Electric power distribution is the final stage in the delivery of electricity. Electricity is carried from the transmission

The Meaning and Function of Primary, Secondary, and Tertiary ...

Primary: The main distribution panel, supplies power from the transformer.  
Secondary: Intermediate panel, routes power to buildings or zones. Tertiary: Final distribution point for equipment or

## Contact Us

For more information, pricing, or custom solutions, please contact us:

Website: <https://www.aitaf.it>

Email: [info@aitaf.it](mailto:info@aitaf.it)

Phone: +39 331 847 2365

Address: Via Raffaello Sanzio 11, 20149 Milan, Italy

This document is for informational purposes only. Specifications subject to change without notice.

