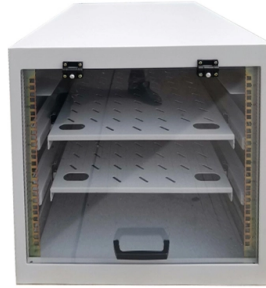


What are the dimensions length and depth of appliance distribution boxes



Overview

Their dimensions are generally around 2 inches wide by 4 inches tall, with depths varying from 1-1/2 inches to 3-1/2 inches. Electrical box dimensions typically refer to: Correct dimensions ensure: Single-gang boxes are the most common type, used for one switch or outlet. Common uses: wall outlets, light switches, low-voltage controls. Choosing the proper enclosure requires fluency in the language of gangs, physical footprint, and—most importantly— internal. Whether for residential wiring or industrial metal enclosures, selecting the right dimensions and depth ensures enough space for conductors, devices, and heat dissipation. There is no single global chart for standard electrical enclosure sizes. * For different colours and thickness, please refer to DETAILS.

Article Content

Standard Appliance Sizes & What to Expect

Unsure of the standard appliance sizes? Here's a comprehensive guide that will help you choose the perfect appliances for your home.

The installation requirements for the distribution box

A distribution box is the heart of any electrical system. It takes the incoming power and safely distributes it to different circuits throughout your

Requirements And Specifications For Installation Of

In flammable and explosive environments, explosion-proof distribution boxes should be selected and explosion-proof treatment should be carried out.

Appliance Size Guide

Use our free Appliance Size Guide to find accurate dimensions for refrigerators, ovens, dishwashers, and more. Make sure your next appliance fits perfectly.

Distribution box catalogue | PDF

This document provides specifications for various distribution boxes including dimensions, mounting sizes, and number of ways. It includes specifications for

Electrical Distribution Box Design Guide

The document provides details for designing the electrical distribution box and circuits for a residence. It includes specifications for the main circuit breaker such

Area distribution boxes with connectors

The boxes connect to the patch panel or enclosure by a maximum of 6 or 12 links. Area boxes can be installed in technical flooring or in false ceilings. Area boxes are offered in Cat. 5e, Cat. 6, Cat 6A,

Standard Electrical Enclosure Sizes: Chart, Dimensions

Electrical enclosure sizes are not universal, but most manufacturers follow common size families. This guide explains typical wall-mount and floor

Area distribution boxes with connectors

5. instAllAtion The area distribution box associated with the copper or optical feedthrough sockets allows total flexibility: the connections close to the workstation are centralised. The copper or optical fibre

Appliance Dimensions Guide — Standard Sizes | ItemFits

Appliance Dimensions Guide What are standard appliance dimensions? Standard US appliance widths: refrigerators are 30-36 inches wide (counter-depth: 24-25"), washers and dryers are 27 inches wide

An Easy Guide to US Standard Kitchen Appliance Dimensions

The goal of ApplianceSizes is to provide design considerations and answers to questions about standard dimensions for Kitchen Cabinets, Refrigerators, Ranges, and Dishwashers to help you

Understanding Standard Appliance Sizes

While these appliances typically still come in standard sizes, some models may come in slightly different dimensions than typical standard sizes.

Electrical Enclosure Sizes: Comprehensive Guide to

Find the right electrical enclosure size for any project. This guide covers standard sizes, selection tips, ratings, and sizing charts.

Use Walton DB box of correct size and thickness | Walton Blog

The width of the electrical box is 40MM, the height is 40MM plus the switch height, and the depth is 10MM plus the maximum switch depth.

How to determine the size, installation method and

(1) Wiring method of distribution box 1) Generally, the incoming line of power distribution box adopts five wire system, that is, a, B and C three-way phase line

2026 NEC Electrical Junction Box Sizes Guide:

These are the standard rectangular boxes you often see used for single light switches or electrical outlets in US homes. Their dimensions are

Ultimate Guide to Electrical Junction Box Dimensions

Explore NEC-based standards, box dimensions, material guidelines, and installation precision in this complete electrical junction box selection and

Mastering the Art of Reading Appliance Dimensions: A

Mastering the art of reading appliance dimensions is not just about ensuring your new gadgets fit; it's about creating a harmonious and functional kitchen environment. By measuring

How to choose a distribution box of the right size for a project based ...

If you're like most electrical professionals, picking the right distribution box for your project can feel like navigating a maze. I've been in those shoes - staring at spec sheets, worrying about

Electrical Box Size & Dimensions Guide | Chart, Depth & Volume

Complete guide to electrical box sizes and dimensions. Includes size charts, depth comparison, volume calculation and industrial metal electrical box selection tips.

An Easy Guide to US Standard Kitchen Appliance Dimensions

If I do not buy a counter-depth refrigerator, will my standard refrigerator protrude too far into a doorway or walkway? The goal of ApplianceSizes is to provide design considerations and answers to

Electrical Box Dimensions: Find the Right Size for Any

This guide explains standard electrical box dimensions by type, compares common sizes, and helps you select the right box for residential,

Understanding Distribution Boxes: A Comprehensive Guide

Learn what a distribution box is, its types, and how to choose the right one for your project. Includes clear examples and expert tips.

Distribution Boards

Easy Installation of outgoing The design of the pan assembly facilitates the installation of outgoing devices. Availability of mixing Mixing two different types of outgoing devices can be provided in

Contact Us

For more information, pricing, or custom solutions, please contact us:

Website: <https://www.aitaf.it>

Email: info@aitaf.it

Phone: +39 331 847 2365

Address: Via Raffaello Sanzio 11, 20149 Milan, Italy

This document is for informational purposes only. Specifications subject to change without notice.

