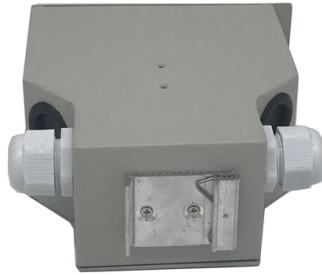


The light-emitting junction box is not covered



Overview

When energized junction boxes are uncovered, the wiring is vulnerable to damage and accidental contact. If easily combustible materials, such as paper or cardboard, are stored near unprotected energized wiring, a spark or electrical arc could easily start a fire. The National Electrical Code (NEC) governs electrical junction box rules. These rules define when you must install a box, how large it must be, how you must install it, and how inspectors evaluate compliance. In most wiring projects, junction box compliance depends on several basic factors: where the box is installed, whether it contains splices, how many conductors are inside, whether the box is accessible, and whether the. The National Electrical Code (NEC), published as NFPA 70, sets minimum safety standards for electrical junction boxes in residential and commercial buildings. Every state has adopted some version of the NEC, though the specific edition in force and any local amendments depend on your jurisdiction's. I have a light fixture that doesn't cover a standard ceiling box. I'd prefer not to have to rip out the ceiling. there is a pool table underneath it.

Article Content

NEC Electrical Junction Box Rules - Complete

Learn NEC electrical junction box rules with box fill calculations, accessibility guidelines, grounding requirements, and inspection essentials.

Light junction box cover does not conceal the box opening

I recently replaced a hallway ceiling light with a pendant, only to find that the supplied canopy was smaller (5") than the hole previously cut in the

Electrical Junction Box Code Requirements: NEC Rules

An open or uncovered junction box is a shock hazard and provides an easy path for fire to escape the enclosure. This sounds obvious, but open

Exposed, Energized Wiring and Electrical Components

Figures 1 and 2 are examples of junction boxes with exposed wiring. Outlets and Switches Missing Covers Electrical outlets and light switches with broken,

NEC Code of Junction Box Requirements Made Simple

The NEC code of junction box says you cannot hide boxes behind walls, ceilings, or floors. You should never cover a box with drywall, paneling, or any part of the

Exposed, Energized Wiring and Electrical Components

Uncovered fluorescent lights, incandescent light fixtures without bulbs, or light fixtures hanging by wiring are all dangerous. Fluorescent lights have energized wiring, starters, and ballasts under their

46 CFR 111.81-1 -

(b) An outlet box must be at each outlet, switch, receptacle, or junction point. (c) Each outlet or junction box must have a cover unless a fixture canopy, switch cover, receptacle cover, or other cover is used.

NEC Code of Junction Box Requirements Made Simple

NEC code of junction box covers sizing, grounding, materials, and accessibility to keep electrical installations safe and up to code.

Are recessed light junction boxes required to be secured to framing?

My electrical inspector just failed me because the hidden J-boxes that attach to my ' LED recessed lights were not mounted to framing. He didn't cite any specific code, so just

Electrical Junction Box Code Requirements: NEC Rules

The National Electrical Code (NEC), published as NFPA 70, sets minimum safety standards for electrical junction boxes in residential and

Exposed, Energized Wiring and Electrical Components

When energized junction boxes are uncovered, the wiring is vulnerable to damage and accidental contact. If easily combustible materials, such as paper or

Electrical junction box needs to be covered

Placing a plastic pipe over a junction box does not provide the protection offered by a 50-cent cover plate. I don't think a responsible electrician would have left the boxes uncovered.

Can I cover junction boxes in the attic with insulation?

In the future I need to have more insulation installed. Is it safe (up to code) to cover the junction boxes with more insulation or is this considered concealing them? Would I have to raise all

Electrical Junction Box NEC Code: Rules, Requirements & Installation

A junction box should not be permanently hidden behind drywall if it contains splices or electrical connections. The NEC requires junction boxes to remain accessible.

Everything You Need To Know About Junction Boxes

Everything You Need To Know About Junction Boxes A junction box is an electrical enclosure used to protect and safely contain electrical connections

Exposed ceiling junction box

Since the light has to be centered over the pool table, otherwise the shadows are wrong, he might not be able to shift the fixture enough to cover the box. I'm sure

code compliance

My plan is to put a junction box into the ceiling (same size as a ceiling light), located underneath the panel. The wire to the panel will need to exit from the box somehow. Can this box be

A Full Guide to the NEC Code for Junction Boxes

Junction box covers must be made of non-combustible materials, such as metal or plastic. Also, they must not be covered by any building finish,

What Is a Junction Box?

Electricians typically secure a junction box to a strong structural location, such as a stud or joist, which is essential if the box supports a light

Junction Box Covered by Insulation | Is It Allowed by

Not only does this access apply to the junction box, but you must be able to get to the wires within the box easily. Now, I would like to point out that

Understanding the Basics of a Junction Box: Your

Discover the essential role of a junction box in electrical enclosures. Learn how to choose the right model for your wiring needs and ensure safety in

Junction Box Covered by Insulation | Is It Allowed by

The IRC and NEC don't expressly prohibit covering a junction box with insulation. However, they require junction boxes to be readily accessible

NEC 314.16 safety concern: uncovered junction boxes and overfill

The one plastic box with a metal cover is safer because it has a cover, but then takes another safety and code hit because that cover is not grounded. As far as code requiring a cover for

Junction Box-What Are the NEC Requirements?

Non-metallic junction boxes must withstand environmental factors, including light, UV exposure, moisture, and more. Additionally, junction boxes

What To Do When Your Light Fixture Doesn't Cover the

Here is the fix for when your new light fixture is too small to cover the junction box on your wall or ceiling. We take on the dilemma of when you're light

Contact Us

For more information, pricing, or custom solutions, please contact us:

Website: <https://www.aitaf.it>

Email: info@aitaf.it

Phone: +39 331 847 2365

Address: Via Raffaello Sanzio 11, 20149 Milan, Italy

This document is for informational purposes only. Specifications subject to change without notice.

