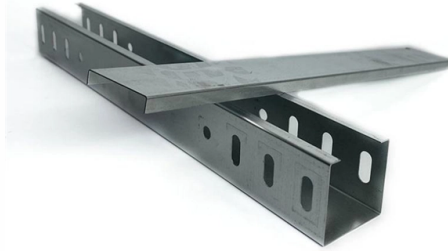


PoE switch connected to AP panel



Overview

Your options are a) remove the PoE injector and install a switch which supports PoE instead between the firewall and AP, or b) run a second network cable from the firewall to a new switch in parallel with the AP cabling. - Some AP (12 EA) are connected to switch. However, When I checked interface status using 'show int status', It looks 'notconnect' status. - LED is blinking 'Red' and 'Green'. -. For PoE to work, the last device before the PD (powered device, in your case an access point) needs to be the PSE (power sourcing equipment, in your case the PoE "injector", also called a Midspan). Wireless APs can generally be divided into two types: fat AP (FAT AP) and thin AP (FIT AP). Fat AP. We have an Omada OC200 controller, 10x EAP223 (v2). It is a common power supply device in PoE power supply systems, with various port output. POE (Power over Ethernet) is a technology that allows both power and data to be transmitted over a single Ethernet cable, which simplifies the installation of network devices such as switches and access points (APs).

Article Content

POE through patch panel not working

If PoE isn't working through the patch panel, then that implies that there is a wiring problem somewhere, right now, it's someplace between the PoE ports on the switch and the Ethernet port on your access

Powering APs

The main differences between the PoE standards is the amount of power they provide. We'll cover each PoE standard in detail later in the lesson. In order for

Although PoE power is provided to AP, AP is "Notconnect" status on switch.

Hello, I have an issue related Access Points. # Situation - Some AP (12 EA) are connected to switch. Power is provided to them. However, When I checked interface status using

4 Connection Methods for PoE Switches | by Skywardtel | Medium

In this method, the PoE switch is directly connected to the wireless AP and network camera that support PoE power supply through a network cable.

How to verify sufficient PoE power provided to all PoE devices ...

Plus we recently installed two SonicPoint ACe access points which use PoE. SonicWall says the ACe devices must be connected to a PoE switch that can provide up to 25 watts PoE power

How to Connect POE Industrial Switch and AP Panel

The poe industrial switch is simply an industrial switch that supports network cable power supply. It can not only realize the data transmission function

Wired vs. PoE Wi-Fi Access Points: How to Choose the

Discover differences between wired and PoE Wi-Fi access points, compare top models, and choose the perfect solution for your home, business, or

Power over Ethernet (PoE) standards and compatibility

If the power requirements for attached PDs exceed the total power budget of the switch, the PoE power to the device on the highest-numbered

How to connect POE with Switch & AP | Tac24

In the video, learn about the specification, features, and connectivity of POE with Switch & AP. For more such informative videos, stay tuned with Tac24.

Although PoE power is provided to AP, AP is "Notconnect" status on

My eyes have been witness to the effects of one or two of lines and the operators didn't know how to troubleshoot because nothing appears in the logs of the switches.

Power over Ethernet (PoE) 101: Your Wi-Fi's Best Friend

Power over Ethernet, or PoE, eliminates the need for an electrical outlet to make expanding your network an easy job. Find out how it works!

How to Connect Camera to Computer? [2026 Updated]

How to Connect PoE Camera to PC without PoE Injector/Switch? Connecting a PoE camera to PC, such as the Reolink Duo 3 PoE, via the router

Networking Scheme of PoE Switch and Wireless AP_Blog_Newbridge

Deploy Huawei AP7060DN wireless AP in various office areas, and connect the AP to the PoE power supply port of the PoE switch through Ethernet cables. This backbone network

MikroTik · Products

MikroTik makes networking hardware and software, which is used in nearly all countries of the world. Our mission is to make existing Internet technologies

Can I connect a simple switch before or after a PoE

You can run the AP's patch cable through a switch to add ports to the network. However, (usually) PoE doesn't pass the switch, so you'll need to connect the

PoE network switch, PoE ethernet switch

A PoE (Power over Ethernet) network switch allows connected devices, such as IP cameras or VoIP phones, to be electrically powered via RJ45 Ethernet cables. With this type of network switch, wiring

connecting POE switch on an AP without an incoming POE

Plug these into the switches on both ends and pretend it's a wire. The switch can then connect to whatever cameras and/or wifi access points you want. Ubiquiti makes some units, but you could go

4 Connection Methods for PoE Switches

the PoE switch is directly connected to the wireless AP and network camera that support PoE power supply through a network cable.

Networking Scheme of PoE Switch and Wireless AP_Blog_Newbridge

The panel AP is configuration free, plug and play, and can be directly connected to the PoE power supply port of the integrated router through Ethernet cables. In general, the wireless

Ubiquiti AP Install: PoE Switch & Fiber Link

Learn how to set up a Ubiquiti outdoor access point using a PoE switch and fiber connection. In this setup, the PoE switch powers the Ubiquiti AP via Ethernet, while the SFP module and fiber cable ...

AP network access problem with PoE switches

This inexpensive POE switch has the same no-name cameras and DVR connected to it. After disconnecting this network segment, all the described

PoE vs. WiFi Camera: Which One is Right for You? - Jenov

PoE vs WiFi security cameras: which is better? Compare installation, reliability, video quality, and cost to choose the right surveillance system for your home or business.

How to Connect POE Industrial Switch and AP Panel

It can not only realize the data transmission function of ordinary industrial switches, but also supply power to network terminals at the same time.

Contact Us

For more information, pricing, or custom solutions, please contact us:

Website: <https://www.aitaf.it>

Email: info@aitaf.it

Phone: +39 331 847 2365

Address: Via Raffaello Sanzio 11, 20149 Milan, Italy

This document is for informational purposes only. Specifications subject to change without notice.

