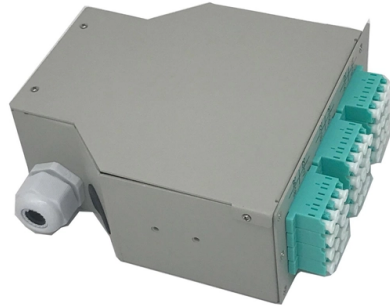


Distribution box air switch matching



Overview

1, the general switch of the household distribution box can generally choose double-pole 32-63A small air switch or isolation switch. AR and AS type rotary isolators. One of the following operating mechanisms can be used on the Airswitch isolators. This range of 6 switch boxes AF-SB is compact and easy to install with only 195 mm for the smallest model, for all others only 250 mm installation height. Up to 8 indoor units can be connected to one port. The common way to divide the electricity back is as follows: one circuit for common socket, one circuit for wall mounted air conditioner. Air switch is used in our home, as long as the current in the circuit exceeds the rated current of the air switch, the air switch automatically disconnects and then cuts off the power supply. The crossarm mounting bracket is.

Article Content

Adjustable Top Entry Distribution box

SuperAir Adjustable Top Entry Distribution Box Overview SuperAir adjustable Top Entry Distribution Box is a vital part of HVAC systems, designed to control air

ED distribution enclosed air switch catalog

The Type ED porcelain-housed disconnect switch provides flexibility and safety in distribution switching. The crossarm mounting bracket is designed for vertical and angle mounting and can also be

Distribution Box Wiring Steps

The lighting and socket circuits generally use 2.5mm² wires, and the air conditioning circuit can use 2.5mm² or 4.0mm² wires. Connection method: Each

Tell you how to configure the switch in the home distribution box ...

When we renovate our home with hydropower, most families will reconfigure the distribution box in our home. This is because the switch in the distribution box that the developer has configured is

Size determination, installation method and wiring mode

The distribution box is the central hub of the home circuit and the general control of our daily power consumption. It is an indispensable electrical equipment. If there

Air Break Switch

The air break switches install in outdoor and mainly use for switching and isolation. The air break switch is mostly installed in the distribution network as a switching

Distribution switchboards

Distribution switchboards, including the Main LV Switchboard (MLVS), are critical to the dependability of an electrical installation. They must comply with well-defined standards governing

How many air switches are in the distribution box for the 20' expansion ...

For information on the number of air switches (air openers) and the number of poles (P-number) in the distribution box of a 20' expansion box, a comprehensive distribution system design

Airswitch Switching and isolating equipment for metal-enclosed

The AirSwitch series of switching and isolating apparatus consists of medium voltage air insulated isolators, suitable for use in metal-enclosed switch-gear (rotary version) They are used in secondary

Best Air Conditioner Electrical Boxes and Disconnect Switches for ...

When selecting an electrical box for air conditioners, consider these crucial factors to ensure compatibility, safety, and efficiency: Compatibility with Your AC Unit: Confirm that the

Air Conditioning & Heat Pump System Switches

HVAC system controls & switches: this article explains where to find and how to use the switches and controls for air conditioning and heat pump systems. We list and explain the function of each air

What are the common accessories of the distribution box and how

Generally, there is a general air switch, which is the power switch of the electrical control cabinet of the whole distribution box.

Connecting an air pressure switch: step-by-step guide

Learn how to wire an air pressure switch to control the operation of your compressor or other pneumatic equipment. Step-by-step instructions and diagrams provided.

Air Switch Kits

Presair Air Switch Kits use a pulse of air to control power on and off, providing safe, contact-free switching. The electric-to-pneumatic converter box is compatible with

Air Switching Systems

Presair's air switching systems uses a pulse of air to switch electricity on and off, safely isolating the user from the electrical current. Safe, versatile and easy to

What Is Air Switch and How It Works

Air switch, I think everyone has heard of it. Each of our families has a distribution box, and the switches in the distribution box are air switches, whether

Understanding Distribution Boxes: A Comprehensive Guide

In general, a distribution box is mainly used to distribute electrical power to multiple circuits and provide circuit protection. An electrical panel may

What Is Air Switch and How It Works

It combines control and multiple protections. In addition to switching on and off the circuit, it can also protect the circuit and electrical equipment from

Air Switches Selection Guide: Types, Features,

Air-actuated switches are devices activated by air that often do not rely on electricity for their operation. Air-actuated switches may also be called air switches and are

Designing a Compressed Air Distribution System

Compressed air is used to operate pneumatic systems in a facility, and it can be segregated into three sections; the supply side, the demand side, and the distribution system. The

Air Excellent distribution box DB816 125-200 16

Detailed information The Air Excellent distribution box DB816 is a versatile and efficient solution, complete with a stepped adaptor, 16 internal air restrictor rings,

How to Install a Garbage Disposal Air Switch

This is how to install a garbage disposal air switch button for a kitchen sink. A disposal air switch and outlet kit can help increase safety and convenience in the kitchen.

Air Flux switch boxes | Components for VRF systems

This range of 6 switch boxes AF-SB is compact and easy to install with only 195 mm for the smallest model, for all others only 250 mm installation height. Up to 8

Wiring requirements and specifications for air switches in distribution ...

When the air switch is a three-phase switch, to figure out whether the incoming line is a three-phase circuit. If it is determined to be two-phase, it should be zero wire to zero wire, ground wire to the

Appropriate compressed air distribution

A number of decisions must be made when designing and dimensioning a compressed air distribution network. Learn more about it here.

Wiring Requirements and Specifications for Air Switches in Low

④ The wiring between the main air switch and each branch air switch inside the box usually goes on the left side, while the wiring for power distribution system outgoing lines usually goes on the right side.

Contact Us

For more information, pricing, or custom solutions, please contact us:

Website: <https://www.aitaf.it>

Email: info@aitaf.it

Phone: +39 331 847 2365

Address: Via Raffaello Sanzio 11, 20149 Milan, Italy

This document is for informational purposes only. Specifications subject to change without notice.

