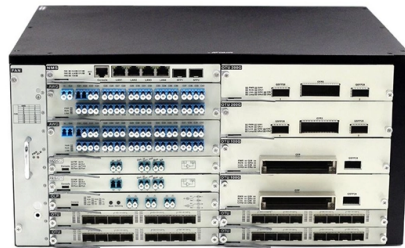


# Configuration of outdoor distribution box air switch



## Overview

1, the general switch of the household distribution box can generally choose double-pole 32-63A small air switch or isolation switch. circuit currents at 50 kA and below and rated maximum voltages of 5 and 15 kV. Advance 27 is ABB' switchgear is seismic certified IBC region D with importance factor of 1. air conditioning circuits generally choose. An outdoor electrical distribution box serves as the critical junction point where incoming power lines are split into multiple branch circuits for outdoor installations, parking lots, building exteriors, and industrial facilities. They provide positive, visible air gap isolation of equipment and line sections for safe examination, maintenance, and repair. It is called an air break switch because it makes use of air as the dielectric medium to suppress the electric arc produced during the closing and opening of the switch.

## Article Content

Pascor Atlantic Air Switches Guide | PDF | Electric

Pascor Atlantic Air Switches Guide 1) The document discusses the selection and application of outdoor air switches for electrical power transmission and

Best Air Conditioner Electrical Boxes and Disconnect Switches for ...

Choosing the right air conditioner electrical box is crucial for efficient and safe cooling system operation. Whether you need a compatible air distribution box for RV air conditioners or a

Air Break Switch

In this article, we will discuss a type of switchgear called an air break switch, its types, and applications in the electrical industry. Let us start with the

DISTRIBUTION SOLUTIONS Technical Application Papers No. 28

Introduction Scope of this document is to provide manufacturers and installers using indoor apparatus into outdoor enclosures a guide, which specifies how to implement adequate solutions to ensure

Technical Specifications for Outdoor LT Distribution boxes with ...

Scope: The scope of this specification covers Weather / Vermin proof LT distribution boxes (LTD) with controllers, MCCB, MCB, Bus bars, Contactors, CT's, Energy Meter, LT gas filled fixed capacitor, DC

AIR-HANDLING UNIT (AHU) DESIGN GUIDELINE

Minimum capacity request should be 20% or more of total capacity. Operate all outdoor units when outdoor temperature is below -15 °C.

IEEE 525-2007\_accepted

IEEE-SA Standards Board Abstract: The design, installation, and protection of wire and cable systems in substations are covered in this guide, with the objective of minimizing cable failures and their

Outdoor Air Switches

In the closed position, air switches must provide adequate capacity to handle all normal and abnormal currents that flow in the system. Finally, air switches must

Best Air Conditioner Switch Boxes for Reliable Outdoor Disconnects

When it comes to safely controlling and disconnecting your air conditioning unit's power supply, choosing the best air conditioner switch box is essential. These outdoor disconnect boxes

Technical and application guide Medium voltage ANSI air-insulated

The Advance product line can be supplied in outdoor non-walk-in, outdoor sheltered-aisle enclosures or PDC (power distribution center) enclosures for outdoor applications.

TECHNICAL SPECIFICATION FOR OUTDOOR TYPE DISTRIBUTION FEEDER PILLAR BOX

1. Scope: This specification covers technical requirements of design, manufacture, testing at manufacturer's works, packing, forwarding, supply and unloading at store/site and performance of

How To Reset The Outdoor Service Switch For An Air

Central air conditioning systems have an outside unit with a compressor that runs and provides the cool air that runs through the vent system.

RELIABLE POWER DISTRIBUTION Outdoor systems

The comprehensive product portfolio, from station class and distribution class disconnect switches to bypass and group-operated disconnect switches, ensures safe network operation.

Ducted Air-conditioning Supply Box Installation

Welcome to our channel! In this video, we'll show you how to install a ducted air-conditioning supply box. Follow our detailed, step-by-step guide to achieve...

Wiring requirements and specifications for air switches in distribution ...

When the air switch is a three-phase switch, to figure out whether the incoming line is a three-phase circuit. If it is determined to be two-phase, it should be zero wire to zero wire, ground wire to the

Air Break Switch

Air break switches can be installed in two ways - Horizontally and Vertically. These are usually installed either in pole-top or mid-pole configuration.

Building Loads and Dedicated Outdoor Air Systems

Air Distribution Device Selection Guidelines The ASHRAE fundamentals handbook, chapter 20 (Air Distribution), provides guidance on several methods of air distribution. Methods include overhead

Best Air Conditioner Electrical Boxes for Reliable

When selecting an air conditioner electrical box, durability, compatibility, and safety are paramount to ensure efficient and secure operation.

How to Choose a House Distribution Box | CHINT global

This article guides you through selecting a distribution box that is both affordable and safe, emphasizing key features, configuration, and practical

Essential Guide To The Outside AC Unit On/Off Switch:

What Is The Outside AC Unit On/Off Switch? The outside AC unit on/off switch is a safety and control device, typically mounted near your outdoor

NPS Outdoor Air Load Break Switch - XTRAN TECH

General NPS series outdoor air break disconnect ( air load break switch) is designed and tested for outdoor distribution and substation applications with

Amazon : Waterproof Mcb Box Outdoor

Power MCB Distribution Box - IP65 Waterproof Outdoor Electrical Enclosure with Transparent Cover for MCB, RCCB, Isolator - Electrical Panel Box for Home & Industrial Use (4 Way MCB Box) 4.5 (2)

Building Loads and Dedicated Outdoor Air Systems

Methods include overhead fully mixed, as well as fully stratified and partially mixed systems from below, and even task /ambient personal air delivery systems.

Outdoor Electrical Distribution Box Specifications: NEC

This specification guide provides system designers, electrical engineers, and procurement professionals with the technical criteria needed to

Outside AC Unit On Off Switch: Location, Types, Usage,

NEC code mandates the existence of a disconnect box for fixed-in-place air conditioning units, typically located outdoors close to the equipment for

How many air switches are in the distribution box for the 20' expansion ...

For information on the number of air switches (air openers) and the number of poles (P-number) in the distribution box of a 20' expansion box, a comprehensive distribution system design

## Contact Us

For more information, pricing, or custom solutions, please contact us:

Website: <https://www.aitaf.it>

Email: [info@aitaf.it](mailto:info@aitaf.it)

Phone: +39 331 847 2365

Address: Via Raffaello Sanzio 11, 20149 Milan, Italy

This document is for informational purposes only. Specifications subject to change without notice.

