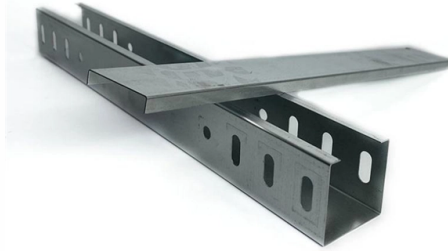


Cable tray 100200 indicates



Overview

Cable trays, 100 mm in height, available in various widths, made of galvanised sheet metal or stainless steel, optionally powder painted in the desired colour. The length of an individual cable tray is 3. Cable trays are mounted to the wall or ceiling using appropriate NKP. us-trations without notice. All illustrations, descriptions and technical information included in this document are provided as indications and can cable trays are equivalent. It is available with a ventilated or solid bottom. Channel tray can protect against. In practice, cable tray dimensions are a system of interrelated measurements —width, depth, length, and material thickness—that directly affect cable fill compliance, heat dissipation, structural loading, and long-term expandability. From an engineering standpoint, cable tray dimensions are not. Is your cable tray system optimized for safety, dependability, space and cost savings?

Cable tray (or cable ladder) systems are a popular alternative to electrical conduit systems, as they have an outstanding record for dependable service, design flexibility and cost savings in commercial and. An electrical cable tray is a type of containment system used to support insulated electrical cables for power distribution, control, and communication.

Article Content

Cable Tray Technical Guide A practical guide to product selection and ...

Cable tray installed in a hazardous location must contain only those cables that are appropriate for this type of environment as defined in Chapter 5 of the NEC.

Cable Tray Size Guide: How to Choose the Right Dimensions

Complete cable tray sizing guide with standard size chart, NEC calculation methods, and real engineering examples. Learn how to select the right cable tray dimensions for your project.

Cable Tray Failures: Types, Causes, and Prevention

However, like any other infrastructure, cable trays are prone to failures that can result in serious safety hazards, financial losses, and downtime.

KP 100/200 cable tray L=3m FeZn; 1,0 mm

Cable trays, 100 mm in height, available in various widths, made of galvanised sheet metal or stainless steel, optionally powder painted in the desired colour. The length of an individual cable tray is 3.0 m.

Cable Tray Questions | Cable Tray Institute

Answer: The NEC does not have a specific installation clearance, but indicates in section 318-6 (b) that cable trays should be exposed and accessible.

Telecommunications standard TIA/EIA-569

Cable Tray Types and Sizes

The wire mesh cable tray, also known as a basket cable tray, is constructed using welded steel wires that form a mesh-like, open structure. This design is especially

Cable Tray Spacing Standards for Installation and Safety

The Importance of Cable Tray Spacing in Electrical Infrastructure Cable tray spacing is a critical aspect of electrical infrastructure, influencing both

Cable Tray Technical Guide A practical guide to product selection and ...

Cable Tray Technical Guide A practical guide to product selection and installation This guide for engineers and installers has been developed by ABB as a practical reference regarding cable tray

Cable Tray Load Calculation and Sizing: Your Easy Guide

Worried about cable tray capacity? Learn simple cable tray load calculation steps. This guide helps you pick the right tray every time, keeping

What Are Equipment Grounding Conductors (EGC) for

Learn the essential role of Equipment Grounding Conductors (EGC) in cable tray systems, including sizing requirements, installation standards, and

A Technical Guide to Tray Cables | OneMonroe Titan

Tray cables are versatile and durable electrical cables used for power, control, and signal transmissions in various industrial environments. They are specifically designed for installation in

Comprehensive Guide to Tray Cable Types

Comprehensive Guide to Tray Cable Types. Explore various tray cable types, insulation, and jacket options. Your guide to tray cable and perfect cable.

Cable Tray Dimensions and Specifications as per NEC

Many electrical systems employ cable trays. They route cables safely & efficiently. NEC defines minimum cable tray size & electrical installation

Cable trays

Cable trays are produced in different heights and widths to give more choice for loading space availability. The cable trays feature slot patterns allowing for

Cable Tray Size and Dimensions: How to Choose the

Learn how to calculate the perfect cable tray size and dimensions for your electrical project. This guide covers load capacity, fill ratios, and industry

Cable tray

In the electrical wiring of buildings, a cable tray system is used to support insulated electrical cables used for power distribution, control, and communication. Cable

Types of Cable Typically Used in Cable Tray

Types of Cable Typically Used in Cable Tray The purpose of a cable tray system is to support, route, and protect cable as part of the cable management system.

Types of Cable Trays - Advantages, Applications and Sizes

Explore the types of cable trays, their advantages, applications, and standard sizes. Learn how they improve cable management and support various industries.

LEGRAND CABLE TRAYS TECHNICAL GUIDE

NEMA VE 1-2017 Specifies requirements for metal cable trays and associated fittings designed for use in accordance with the rules of Canadian Electrical Code, Part I and the National Electrical Code®

Types of Cable Trays: Ladder, Perforated, Basket, Solid

Explore all types of cable trays—ladder, perforated, basket, solid, and channel. Learn their uses, materials, pros, cons, and key differences.

Cable Tray Width, Dimensions and Specifications as per

Learn about cable tray width dimensions and specifications as per NEC standards. Understand types, sizes, materials, and installation guidelines for safe and

Cable Tray Dimensions Guide: Standard Sizes, Tray

We will first explain standard cable tray dimensions used across the industry, then examine how dimensions vary by tray type, and finally show how to

CTI Technical Bulletin

Many cable tray cables include a crush test as part of the listing and are rated to leave the cable tray unsupported for distances up to six feet. Communication cables in particular are marked to be

100+ Essential Questions Answered About Cable Trays:

Discover over 100 expert answers about cable trays, covering key topics like material selection, load capacity, installation methods, and maintenance.

A Comprehensive Guide to Tray Cable

Since cable trays do not fully enclose cables, which would be the case with cable raceway or ducts, tray cable must conform to strict requirements to

B-Line series Cable Tray Design Considerations

Our wind certification report provides you with list of acceptable B-Line series cable tray supports, fittings and covers based off of the environmental conditions, cable loading, and type of cable tray in your

GUIDE CABLE TRAYS TECHNICAL

In accordance with its continuous improvement policy, Legrand reserves the right to change the specifications and illustrations without notice. All illustrations, descriptions and technical information

A Guide to Installing and Supporting Electrical Cable Trays

A professional guide to installing electrical cable tray systems per NEC Article 392. Covers support, securing cables, and fill calculations.

What Is the Maximum Voltage Rating of Tray Cables?

Tray cables are an integral part of electrical systems in industrial, commercial and utility environments. These cables are designed to provide power, control and signal transmission safely

Contact Us

For more information, pricing, or custom solutions, please contact us:

Website: <https://www.aitaf.it>

Email: info@aitaf.it

Phone: +39 331 847 2365

Address: Via Raffaello Sanzio 11, 20149 Milan, Italy

This document is for informational purposes only. Specifications subject to change without notice.

