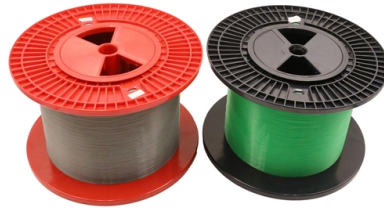


Azerbaijan 7-pin laser diode socket



Overview

1pcs 7PIN TO46 Photodiode Test Aging Socket 1. Pin distribution: A = 3-4-0 structure
The LDM-4983T is designed for typical telecommunication 13-pin and 7-pin butterfly laser diode packages and includes a separate case temperature control for applications requiring tight temperature stability. Zero insertion force (ZIF) sockets and spring-loaded clamps facilitate ease of mounting. Thorlabs offers a versatile range of accessories for convenient integration of laser diodes into functional systems. 6 mm, Ø9 mm, and TO-5 laser diode packages. All of these sockets. Smart Filtering As you select one or more parametric filters below, Smart Filtering will instantly disable any unselected values that would cause no results to be found. Please modify your search so that it will return results. We also provide cable-equipped sockets designed for FCD. It is same or similar to as the socket used in Newport 740 series and ILX LDM 4980 series 14-pin butterfly laser mounts (see last 2 pdf links below), you may be able to replace the sockets of Newport or ILX laser mount.

Article Content

Azerbaijan

Azerbaijan - power plug and socket In Azerbaijan, electrical sockets and plugs are type C or F. Type C has two round pins and type F has two round pins with two earth clips on the side.

Laser Diode Mounts

Laser Diode Mounts Optoprim and its partner offers a range of laser diode mounts for a large choice of laser diode packages. Fiber coupled laser diodes (Butterfly type

Azerbaijan Plugs

Azerbaijan uses the Type F plug. Type F electrical plugs used in Azerbaijan are manufactured to the CEE 7/4 and CEE 7/7 standards and is commonly referred to as a Schuko plug. The line and neutral

Laser Diode Electrical Connection Socket, PC Mount

The LDS-2 is a PC mount, three pin electrical socket that fits both 5.6mm and 9mm diameter base diodes. The socket accepts laser diodes with wire leads 24 to 26

Azerbaijan

Power Plugs and Sockets in Azerbaijan Azerbaijan uses two common power plug types. Type C Plug Type C plugs are widely used across Europe and many other parts of the world. Characteristics of

TO56 7pin 2.8mm 2.9mm 3.1mm 3.5mm 3.39mm

TO56 7pin 2.8mm 2.9mm 3.1mm 3.5mm 3.39mm 4.3mm pitch Crystal transistor test socket laser diode socket \$ 16.80 - \$ 18.80 Support

Laser Diode Socket for Ø5.6 mm Laser, 3 Pin

The following pin configurations are provided for strain relief cables that use a DB9 connector (Item #'s ending in -DB9) when used with the compatible style of laser diode. Each relief cable with bare wire

Laser diode connecting socket

Connecting socket for laser diodes. Advantages: ATTENTION! Laser diode not included! Online shop for industrial line laser solutions, cross lasers, positioning

TO60 7pin 8pin 9pin 2.6mm 2.9mm pitch Crystal

Home / Aging test socket / Laser diode socket / TO60 7pin 8pin 9pin 2.6mm 2.9mm pitch Crystal transistor test socket laser diode socket TO60 7pin 8pin 9pin 2.6mm

LDM-4984 Butterfly Laser Diode Mounts, ILX Lightwave

The LDM-4984 is designed for typical 14-pin telecommunication butterfly laser diode packages. Zero insertion force (ZIF) sockets and clamping arms make mounting

1pcs 7PIN TO46 Photodiode Test Aging Socket - LaserSE Lasers Life ...

1pcs 7PIN TO46 Photodiode Test Aging Socket. 1. Product type: APD TO / ROSA / Rx.
2. Pin length: $L \leq 7.5 \pm 0.5\text{mm}$; 3. Pin diameter:

Search results for: laser diode IC & Component Sockets - Mouser

Applied Filters: Connectors IC & Component Sockets ... Reset All Please modify your search so that it will return results. To use the less than or greater than function, please select a value first.

laser diode sockets

Looking for a good deal on laser diode sockets? Explore a wide range of the best laser diode sockets on AliExpress to find one that suits you! Besides good quality brands, you'll also find

Laser Diode Tools and Accessories

Thorlabs offers a versatile range of accessories for convenient integration of laser diodes into functional systems. These laser diode sockets are ideal for OEM-type

Laser Diode Test Socket 3-pins LD Socket TO-18 (5.6mm)

1. Three-legged laser diode test, the length of pin is universal. 2. Low resistance, not easy to oxidize, long service life. 3. Small size, easy to install and use

Roithner Lasertechnik

SOCKETS FOR LASER DIODES Teflon Sockets for 5.6 mm and 9.0 mm laser diodes, 3-pins or 4-pins teflon body, gold plated contacts, superior quality

6 pin laser diode test socket ROSA 6pins LD detection

Quantity: 1pcs Specifications: 6pin Note: 6pin socket has a lot of size specifications, accept customization (please send us dimensional drawings), thank you!

Butterfly Packaged Laser Diode Mount, Zero Insertion

This butterfly packaged laser diode mount and heat sink is one of a series of affordable solutions designed for laboratory R& D applications. The model BTY-T1

Azerbaijan Laser Diode Market (2025-2031) | Trends, Outlook

Drivers of the market The Laser Diode market in Azerbaijan is primarily driven by factors such as the increasing demand for laser-based technologies, growing applications in telecommunications and

Laser Diode Mounts | Arroyo Instruments

The 203/205 Butterfly LaserMounts offer solutions for 14-pin and 7-pin butterfly lasers. With zero-insertion-force (ZIF) sockets and fully configurable wiring, the

Laser Diode Mount, 7 or 13-pin Butterfly, Temp Controlled

The LDM-4983T is designed for typical telecommunication 13-pin and 7-pin butterfly laser diode packages and includes a separate case temperature control for

Laser Diode Mount, 7 or 13-pin Butterfly

The LDM-4983 is designed for typical telecommunication 13-pin and 7-pin butterfly laser diode packages. Zero insertion force (ZIF) sockets and spring-loaded

Butterfly Laser Diode Mount (14-PIN)

This affordable laser diode mount is designed to safely mount 14-pin butterfly packaged laser diodes. It features an Azimuth zero insertion force (ZIF) socket

Laser Diode Tools and Accessories

These laser diode sockets are ideal for OEM-type implementations and are compatible with our selection of Ø3.8 mm, Ø5.6 mm, Ø9 mm, and TO-5 laser

Laser Diode Socket 3 Position IC & Component Sockets - Mouser

Results: 2 Applied Filters: Connectors IC & Component Sockets Accessory Type = Laser Diode Socket Number of Positions = 3 Position Reset All Please modify your search so that it will return results. To

1pcs 7PIN TO46 Photodiode Test Aging Socket - LaserSE Lasers Life ...

Accommodates most any TO package format with pin circle options of .079 " (2.0 mm) or .100" (2.54 mm), including popular laser diode devices,

Lightwavestore > Laser Controller/Mount > 7-pin

Price is for one 7-pin terminal/socket only. It can fit standard prototyping boards and breadboards which pitch (space) is 0.1 inch (2.54cm). Ideally, you need a 5253

Laser Diode Sockets | JC CHERRY INC.

We offer a variety of sockets compatible with laser diode packages such as TO-18, TO-46, TO-52, and TO-72. We also provide cable-equipped sockets designed for FCD.

Contact Us

For more information, pricing, or custom solutions, please contact us:

Website: <https://www.aitaf.it>

Email: info@aitaf.it

Phone: +39 331 847 2365

Address: Via Raffaello Sanzio 11, 20149 Milan, Italy

This document is for informational purposes only. Specifications subject to change without notice.

